



line burner

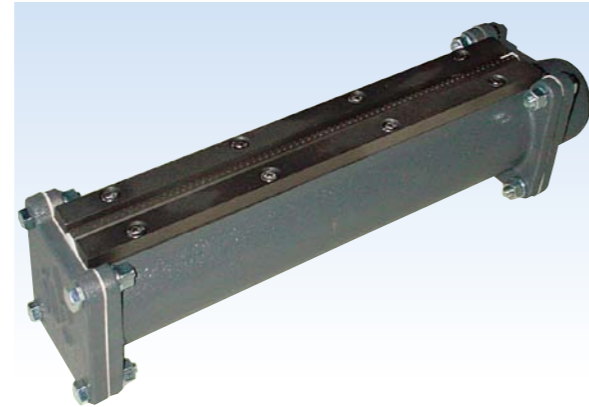
Mini flame burner

MF-1.5U,3.0U,4.5U,6.0U,7.5U,9.0U

It is a stable line-shaped burner of flame for burning in combination with a premixing mixer.

Feature

- 1 Very sharp flame and high stability.
- 2 Burner is a unit type and its length is 300 mm. Several can be connected and used according to the application.
- 3 The body of the burner is made of cast iron, it is solid with low distortion due to heat.



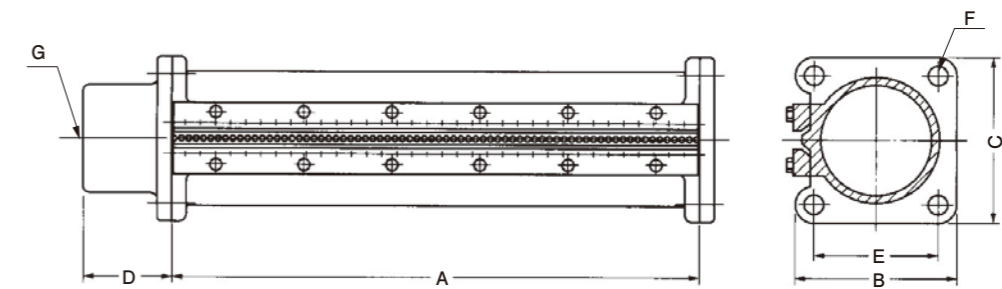
Main Usage

- Printing dryer
- Paper dryer
- Hot air dryer
- For product can soldering, the others

flame



Specification·Overall size



Model	MF-15K	MF-30K	MF-45K	MF-60K	MF-75K	MF-90K
Standard combustion capacity (kW)	16	31	47	63	79	95
Standard mixing gas pressure (kPa)	0.2	0.2	0.2	0.2	0.2	0.2
Overall size (mm)	A	300	600	900	1200	1800
	B	92	92	92	92	92
	C	92	92	92	92	92
	D	50	50	50	50	50
	E(□)	72	72	72	72	72
Connecting size	F	4-10φ	4-10φ	4-10φ	4-10φ	4-10φ
Connecting size (Rc)	G (mixing gas)	1 1/2	1 1/2	1 1/2	1 1/2	1 1/2

Handling Precautions

- If the connection of the burner is long, uniform flame can be obtained if the mixed gas is sent from both ends of the burner.