



Radiant tube burner

# Gas ceramic immersion heater

CIH-100A,150A,225S

CIH-100A,150A,225S Gas ceramic immersion heater

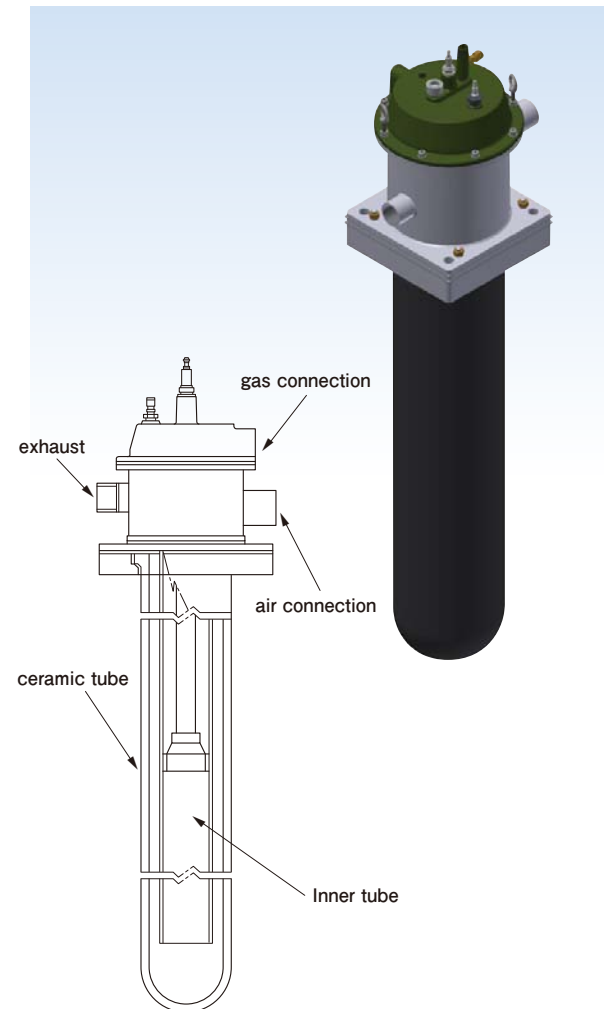
## Gas ceramic tube realizing substantial energy saving and metal loss reduction

### Feature

- Gas ceramic tubes are capable of greatly reducing energy consumption and reducing metal loss in the aluminum melting furnace and galvanizing furnace by reducing oxides, uniformity of the melt temperature, and direct heating from inside the molten metal such as aluminum and zinc.
- Improvement of heat transfer to molten metal
- Homogenization of molten metal temperature
- Reduction of gas absorption to molten metal
- Reduction of dross

### Main Usage

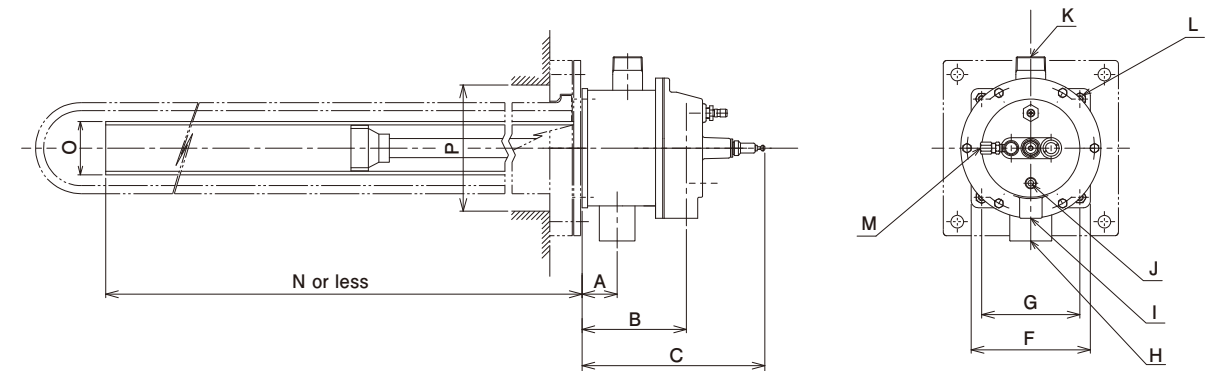
- Aluminum melting furnace · Holding furnace
- Zinc melting furnace



### Specifications

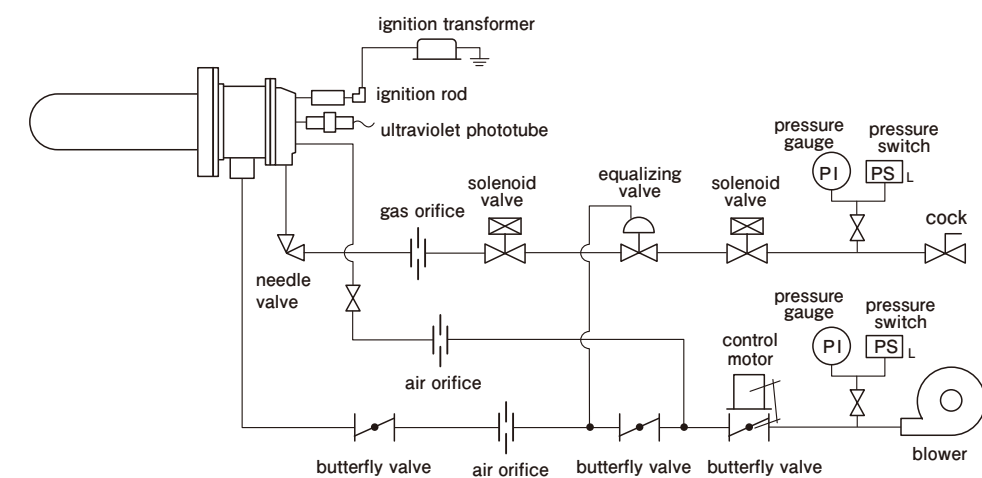
Model	CIH-100A	CIH-150A	CIH-225S
Max./Min. combustion capacity (kW)	23.3 / 7.0	40.7 / 11.6	58.1 / 23.3
Supply gas pressure (kPa)	5.9 or more		
Supply air pressure (kPa)	5.9 or more		
ignition method	Main direct ignition by spark rod		
Detection method	Ultraviolet phototube		

### Overall size



Model	CIH-100A	CIH-150A	CIH-225S	
Connecting size (Rc)	A	50	75	65
	B	148	246	300
	C	270	370	415
	D	130	160	190
	E	130	160	200
	F(□)	170	260	380
	G(□)	140	210	330
Mounting size (mm)	H(air)	1 1/4		
	I (gas)	1/2		
	J(primary air)	3/8		
Ultraviolet phototube cooling port	K(exhaust)	1 1/4	1 1/2	2
	L	4-φ12	4-φ19	4-φ18
Inner tube length (mm)	M(φ)	10		
Inner tube size	N	875	788	1000
Mounting aperture size (mm)	O	2 1/2	4	6
	P(φ)	200	245	330

### Example of flow sheet



### Handling Precautions

- Please open the tube bottom more than 100 mm from the hearth
- Allow at least 200 mm gap between burner tubes
- Please open the burner tube and furnace wall more than 100 mm.
- For exhaust type in the furnace, please do not point the exhaust port to the inspection port.
- For the exhaust type outside the furnace, do not connect the exhaust duct directly to the exhaust port.